

# BRIDGE+MORE BY BRIDGE COMPANY

## How to fix Error 88



# BRIDGE+MORE<sup>BY BRIDGE COMPANY</sup>

At Bridge Company we are proud about our **Bridge+More** solution and our unique support options we offer to our users worldwide, such as:

- Internet bases full insight,
- Real time knowledge and effect of a change,
- Real time test,
- Detailed logs
- Autonomy for our users to make changes that might be required – or we can remotely do it for them if they ask for it.



## What is Error 88?

It could be caused by different factors, such as

- Dust,
- Small pieces of dirt,
- Dropping the device or
- shaking the dealer.

As a result the internal disc wont be able to rotate and the user should be able to fix it manually.



## How to fix Error 88

### MANUAL

---



BY BRIDGE COMPANY  
**BRIDGE+MORE**

## How to do a Hard Reset

When doing a hard reset the dealer will recalibrate the engines, reset the center core turning and card moving mechanism settings and also reset calibration settings to default.

## How to fix Error 88

### MANUAL

---



BY BRIDGE COMPANY  
**BRIDGE+MORE**

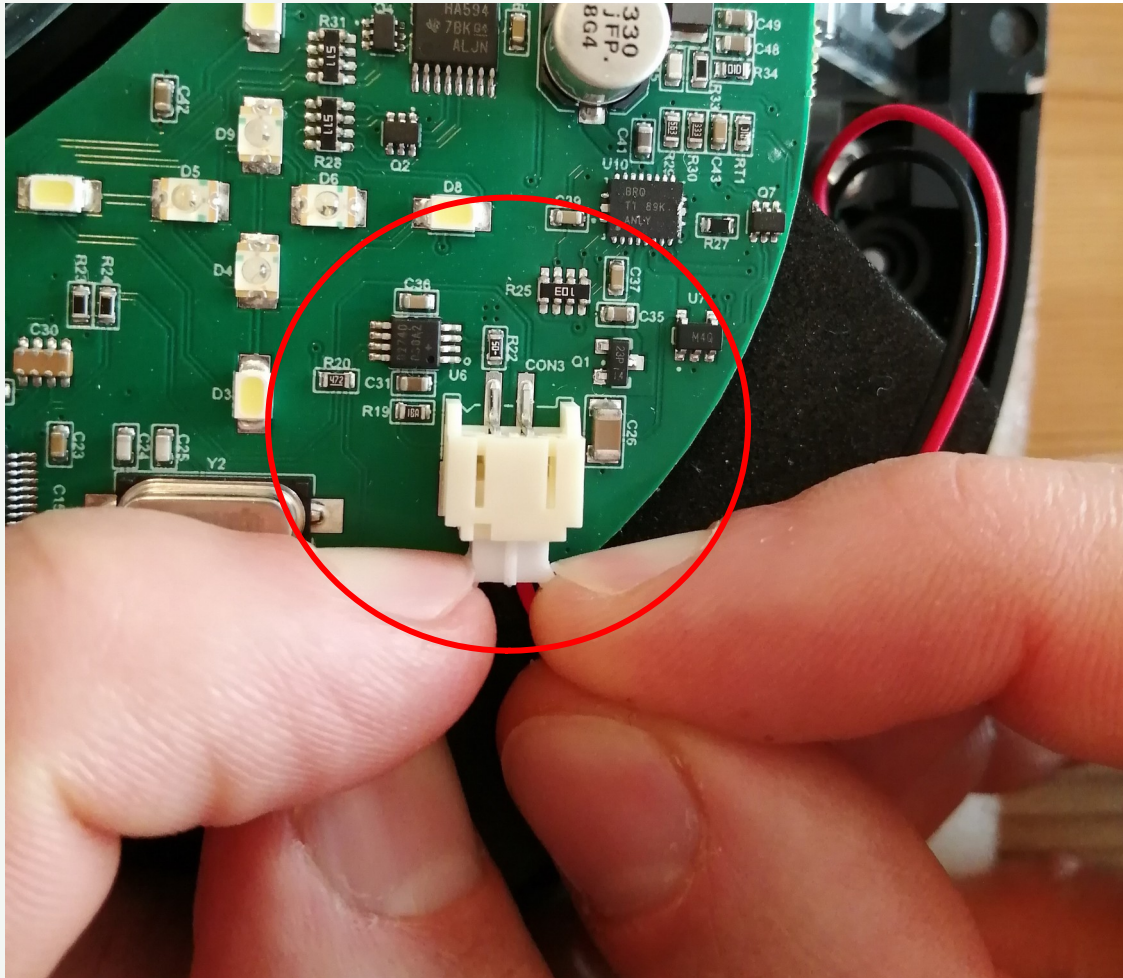
### **1. Place the dealer upside down**

Start by unscrewing carefully the 8 Torx10 screws from the bottom corners.



# How to fix Error 88

## MANUAL



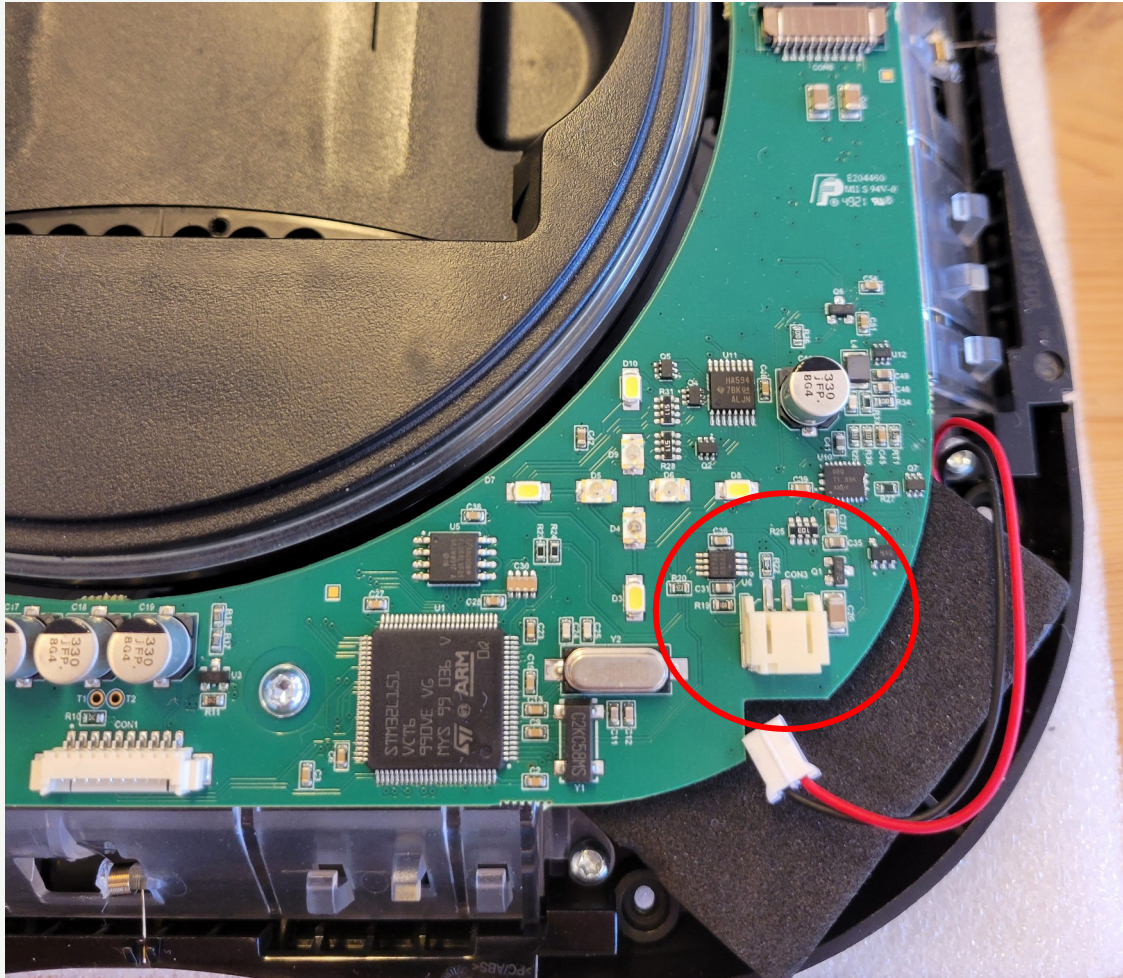
### 1. Disconnect battery

Disconnect battery by pulling gently like showed on the picture

# How to fix Error 88

## MANUAL

---



### 1. Disconnect battery



## 2. Search and Identify

Identify the small plastic part sticking out of the core, marked in red.



## How to fix Error 88

### MANUAL

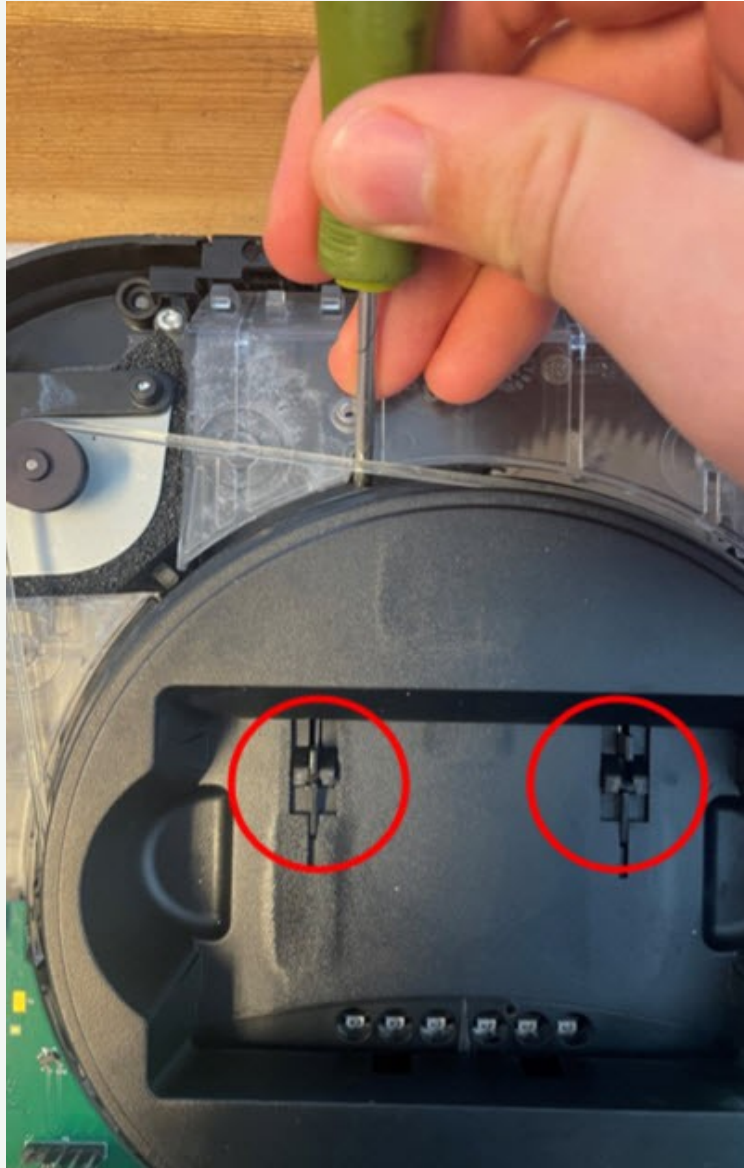
---



### 3. Get the tools

With a small screwdriver or similar tool,

- Push the small plastic piece towards the middle of the core.



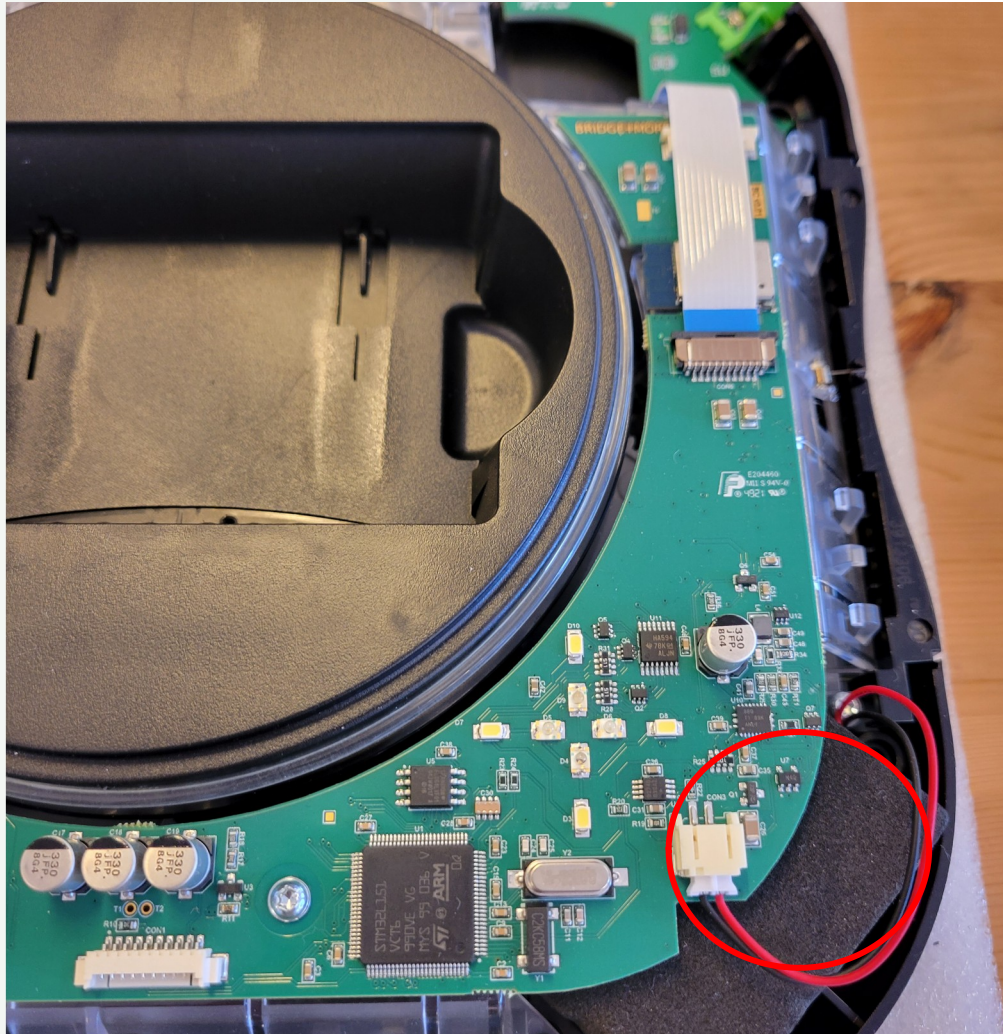
### 4. Gentle move

- Stop once the pushing mechanism has reached the point as shown in the picture.
- Remove the screwdriver.
- Place the top chassis back onto the dealer.

# How to fix Error 88

## MANUAL

---



**Reconnect battery**



## How to fix Error 88

### MANUAL

---



BRIDGE+MORE<sup>BY BRIDGE COMPANY</sup>

### 5. Flip it back

- Flip the dealer to have back of the dealer.
- Screw the 8 Torx10 screw in again.

### 6. Place the lid

- Place the lid back on,
- **Connect the charger cable (charger must be connected to a power outlet); and**
- The dealer will start automatically.



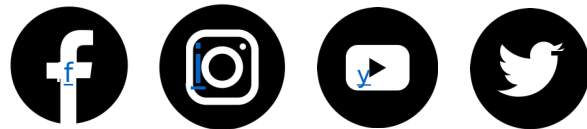
# Thank you!

We are always glad to assist you. For further information please write to: [info@bridgeplusmore.com](mailto:info@bridgeplusmore.com)

Visit our website [www.bridgeplusmore.com](http://www.bridgeplusmore.com)

Visit our info site [www.bridgeplusinfo.com](http://www.bridgeplusinfo.com)

Please be part of our Social Media communities and learn more of the latest news and updates of our **Bridge+More** solution.



[Our SHOP](#)

